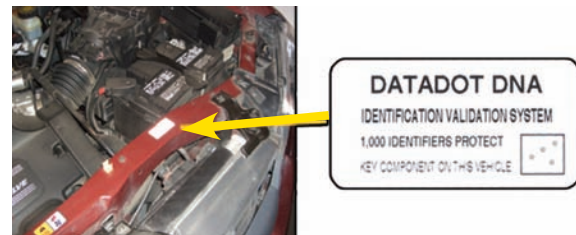
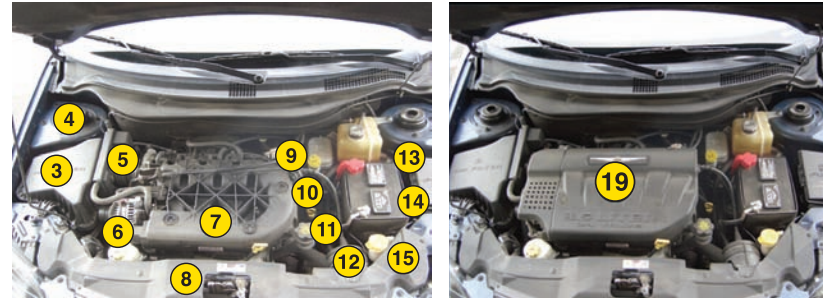


The following template identifies the typical points that are marked on a vehicle. Variation may occur with different makes and models.



Typical Application Points

1. Registration Sticker
2. Doors and Hinges
3. Air Intake Housing
4. Strut Housing
5. Throttle Positioner
6. Alternator and Air Compressor
7. Intake Manifold
8. Radiator
9. ABS Module
10. Engine Block (numerous locations)
11. Transmission Housing
12. Speed Control
13. Computer Housing
14. Fuse Box
15. Headlight Housing
16. Inside Reinforcing Openings
17. Four Corners
18. Hinge Areas
19. Engine Cover



Additional Application Points

1. Electric Radiator Fan
2. Under Seats
3. Turbo Charger
4. Front and Rear Bumper
5. Spare Tire
6. Inside Alloy Wheels
7. Spare Wheel Well
8. Back of Tail Light



Vehicle Identification System Law Enforcement Guide

DataDotDNA®

a simple, effective and permanent method of marking and identifying vehicles.

About DataDotDNA®

DataDots are a state-of-the-art identification technology which allows any asset to be quickly and effectively marked with its own unique "DNA." Single inscribed microdots were originally developed by the U.S. military in the 1940s to covertly tag or identify items.

Each DataDot is the size of a grain of sand and is laser-etched with a unique identifying code. Hundreds of the tiny dots are sprayed onto the protected asset with an ultraviolet adhesive. Although nearly invisible to the naked eye, they can be found easily by using a simple ultraviolet blacklight.

The DataDot database is accessible by Law Enforcement agencies 24 hours a day, allowing instant identification.

Where Are Datadots Sold And Installed?

DataDot maintains strict control on the manufacture, distribution and fitment of DataDots.

The automotive product is only sold and fitted by authorized vehicle dealers in the US and Canada. Please contact DataDot USA for an up to date list of active dealerships in your area.

Vehicle manufacturers have also recalled vehicles for fitment of DataDots to selected vehicle parts to combat thieves. The Nissan Maxima recall in the Northeast region of the US was an example of the use of DataDots to effectively reduce theft and combat crime.

Datadots - DNA For Any Vehicle.

Each vehicle is marked with a minimum of 1,000 uniquely coded DataDots which are simply brushed on the chassis, compliance plates and high theft engine components. DataDots may also be applied to other parts of the vehicle including alloy wheels, DVD's and stereo equipment.

The information coded on the Dot is either the original manufacturers VIN number, or a unique PIN number which is linked to the VIN of the vehicle through national databases only accessible by law enforcement.

Every vehicle fitted with DataDot is identifiable through the NICB/ISO national database and via the National DataDot database for the life of the vehicle. Window and engine warning decals are also fitted to every marked vehicle to aid in theft deterrence and recovery.

As it is near impossible to remove the 1000's of DataDots applied to a vehicle, professional thieves run a very high chance of being either caught with stolen items or can be identified later as the distributor of stolen parts through the finding of just ONE DataDot.

How Are Dots Located And Read?



Vehicle window activation stickers and an engine decal quickly identify if dots have been fitted to a vehicle.

If the warning decals have been removed, then standard law enforcement blacklights will quickly identify

the presence of DataDots as the adhesive will fluoresce on marked components. A fitment template is enclosed highlighting key marking points by dealers.

The Dots are read using a simple 30x or greater magnifying reader. Readers are commonly available from most electronic or hardware stores. Once the dot is read, law enforcement can quickly identify the true owner of the asset using either the National vehicle database.

Where a PIN is used in lieu of the full VIN, the NICB provides law enforcement agencies the ability to conduct a search of stored DataDot information on the National Insurance Services Office (ISO) database which references each PIN with databases of automobile VIN and manufacturer shipping and assembly records.

In the case of all other assets, police can check the PIN against the National DataDot USA database by direct access through the Internet (Access codes are only available to police by calling DataDotsUSA toll-free at 1 800 546 4454.

What About Canada And Mexico?

It is a sad fact that many vehicles stolen in the US are moved over national borders either in part or whole. DataDots are available for sale in the US, Canada and Mexico.

All vehicles fitted are identifiable by law enforcement in each country, or across national borders, through the National DataDot database. DataDot is actively working with Canadian and Mexican regulatory authorities and their law Enforcement in continuing to build overall awareness.

How Can Law Enforcement Use Dots?

DataDots are actively used by Law Enforcement, divisions of the FBI, other regulators and insurance agents in covert sting operations. These operations typically focus on auto theft, theft and re-sale of stolen parts and insurance fraud.

Authentication Of Police Badges

DataDot has partnered with Smith & Warren, one of the largest manufacturers of law enforcement badges in the US, with Dots now being incorporated into the finished badge product. This technology adds authenticity and proof of ownership to law enforcement and other regulatory badges.

How Secure Is The Registration Information?

Access to information about vehicles fitted with DataDots is only available to law enforcement, the NICB and other approved regulatory bodies in North America.

Such security ensures the integrity of the DataDot information, helps detect vehicle rebirthing and ensures that customer privacy is ensured at all times.

For more information:

web: www.datadotusa.com

email: lea@datadotusa.com

call: 1-800-546-4454

